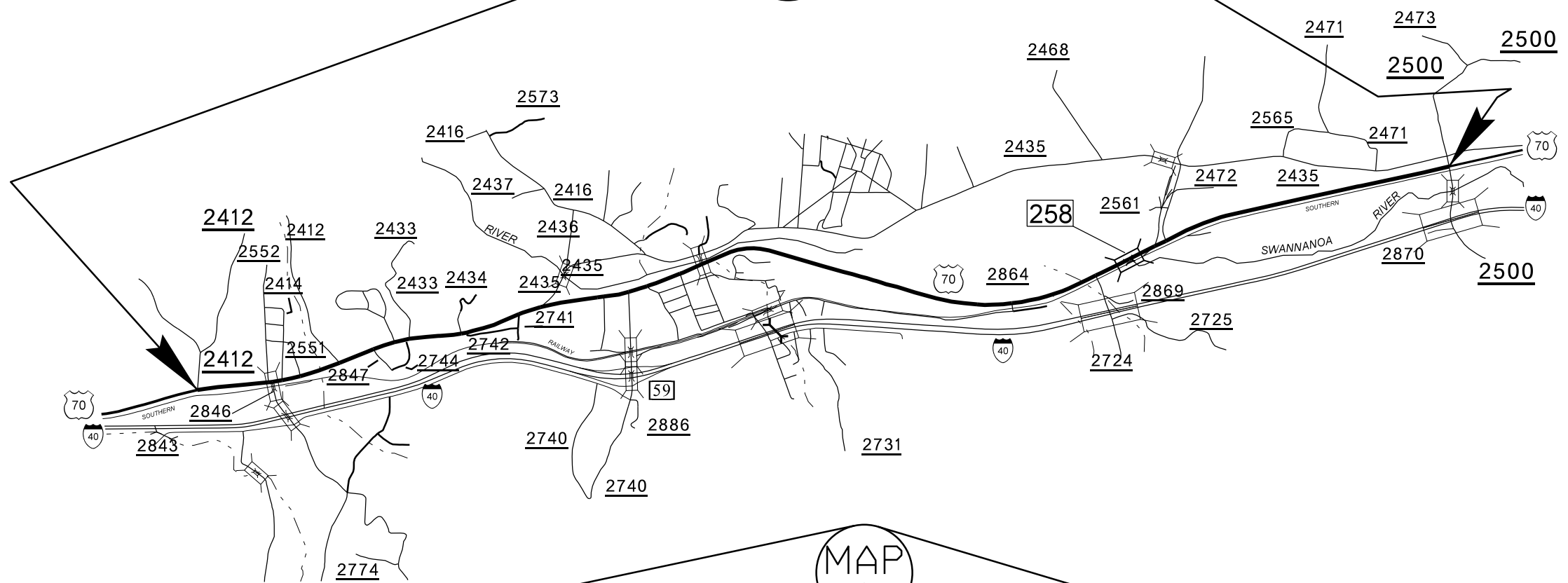
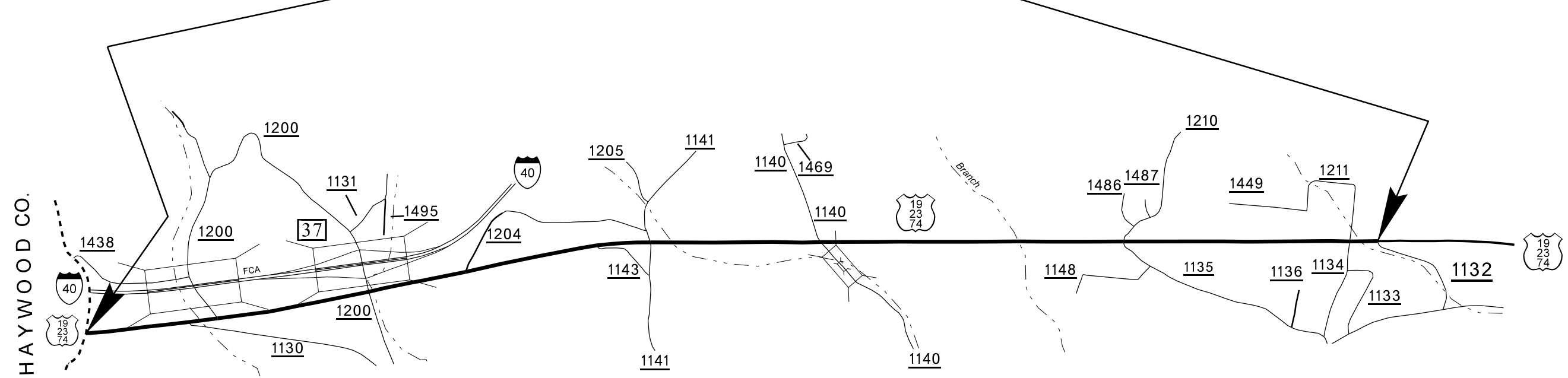


PROJECT NO.	SHEET NO.	TOTAL NO.
2017CPT.13.01.10111, 2017CPT.13.01.20111, 2017CPT.13.01.20112	1	19

MAP
4



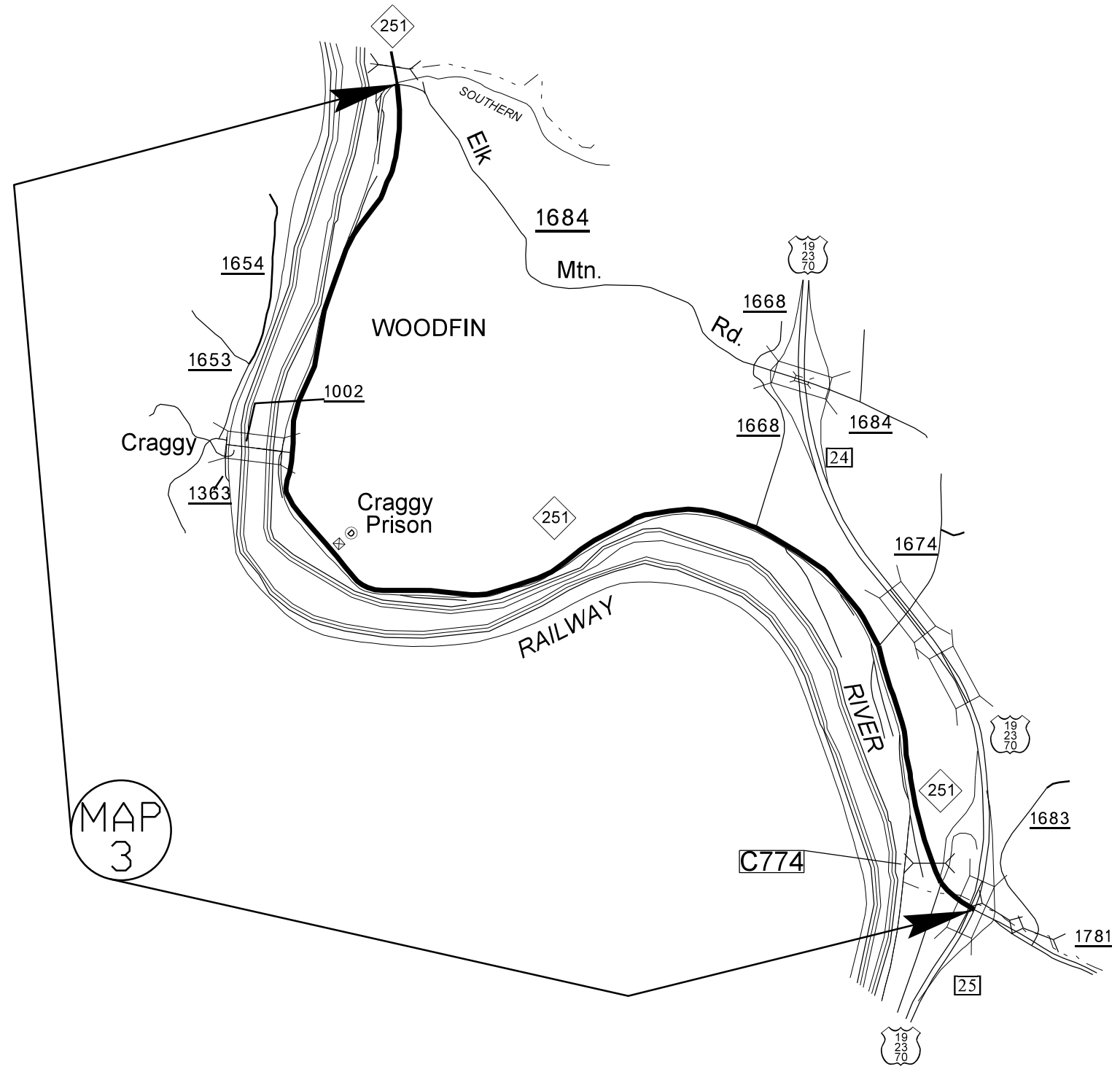
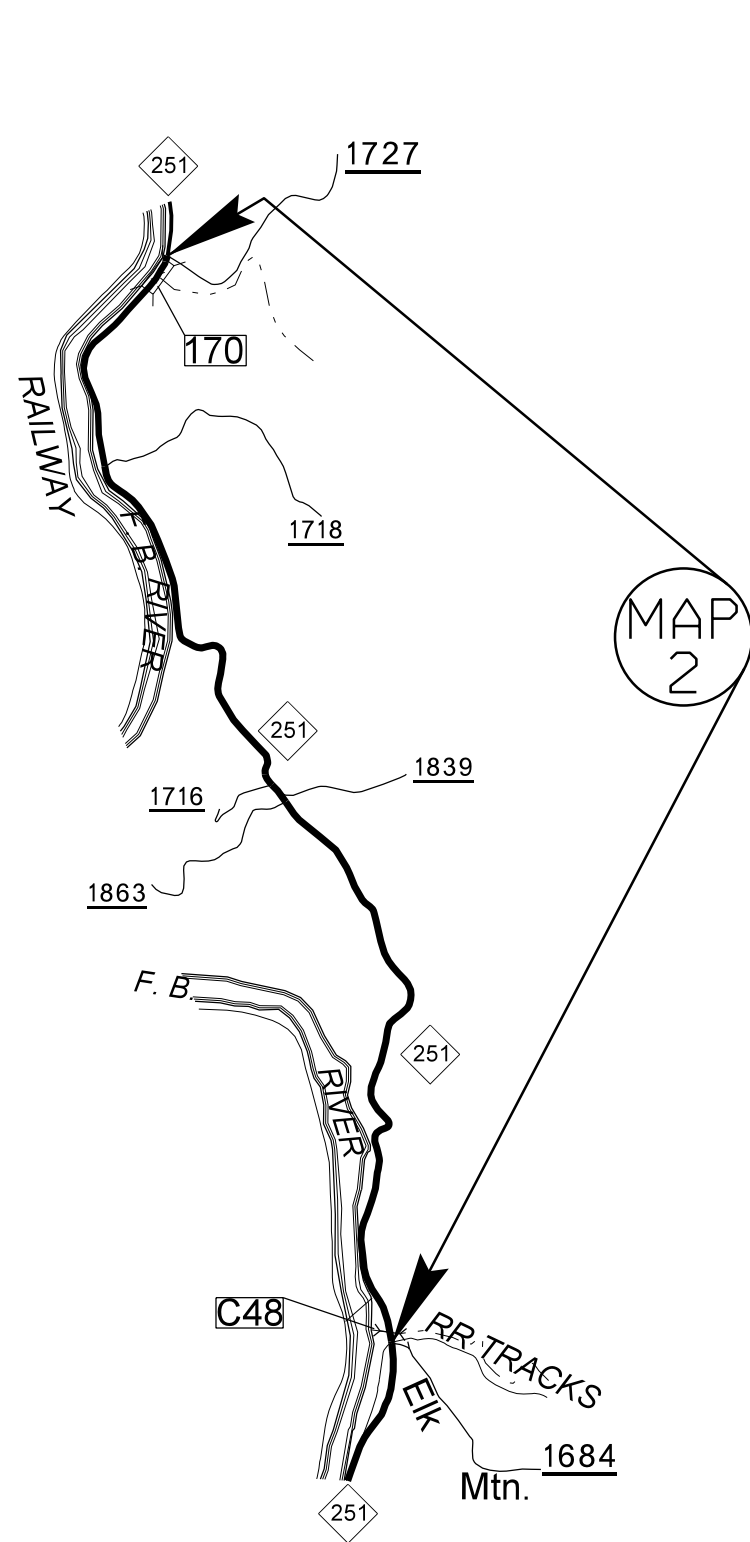
MAP
1



HAYWOOD CO.

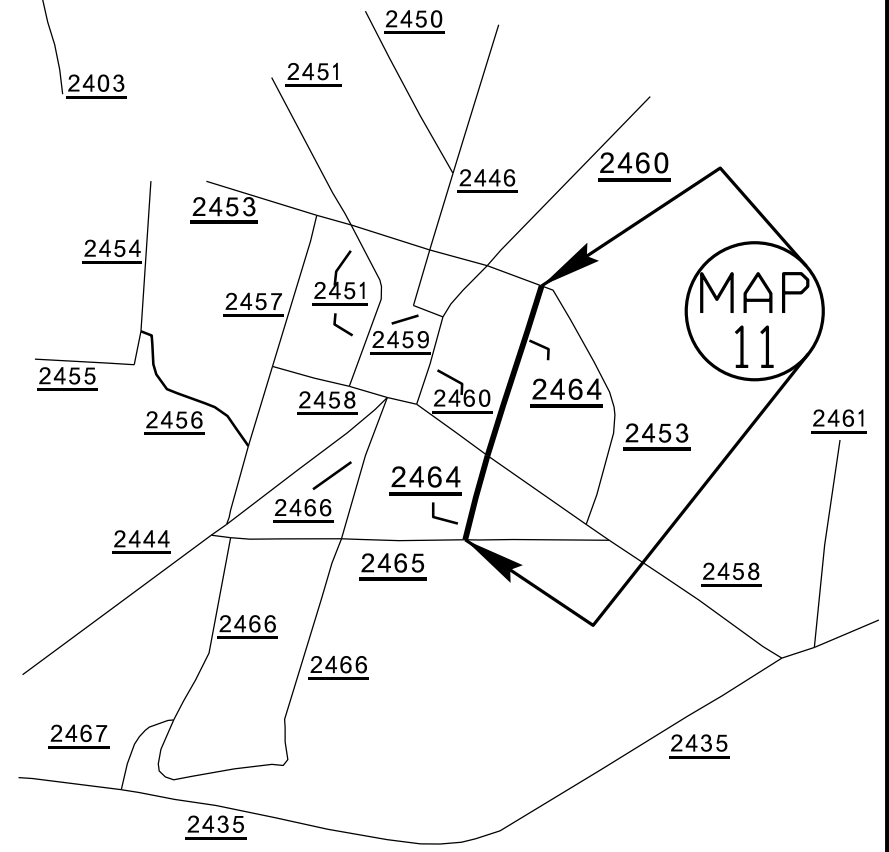
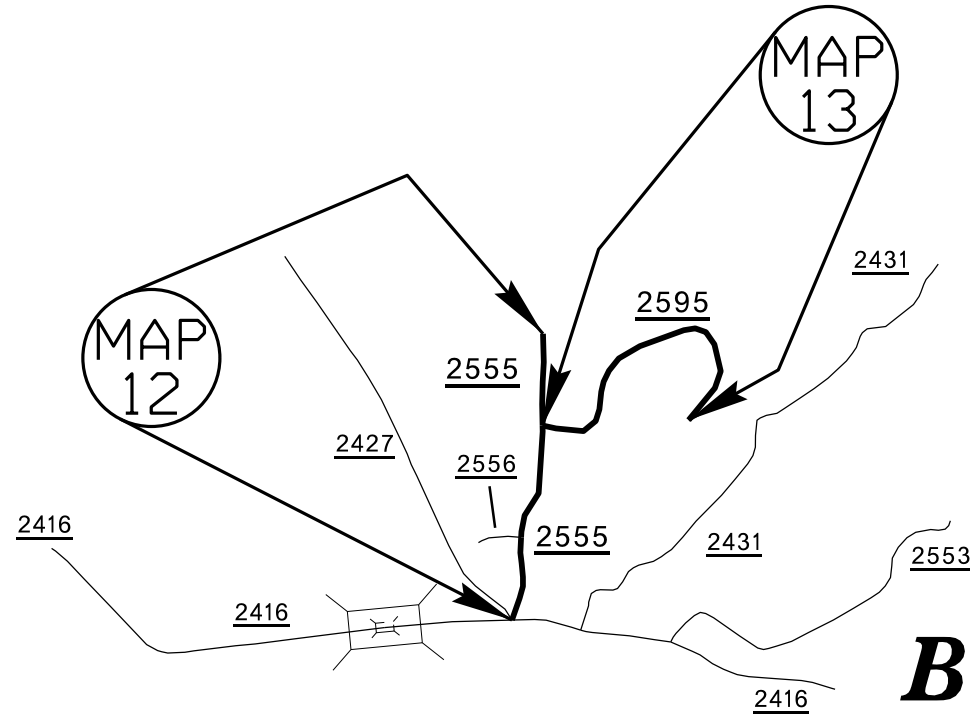
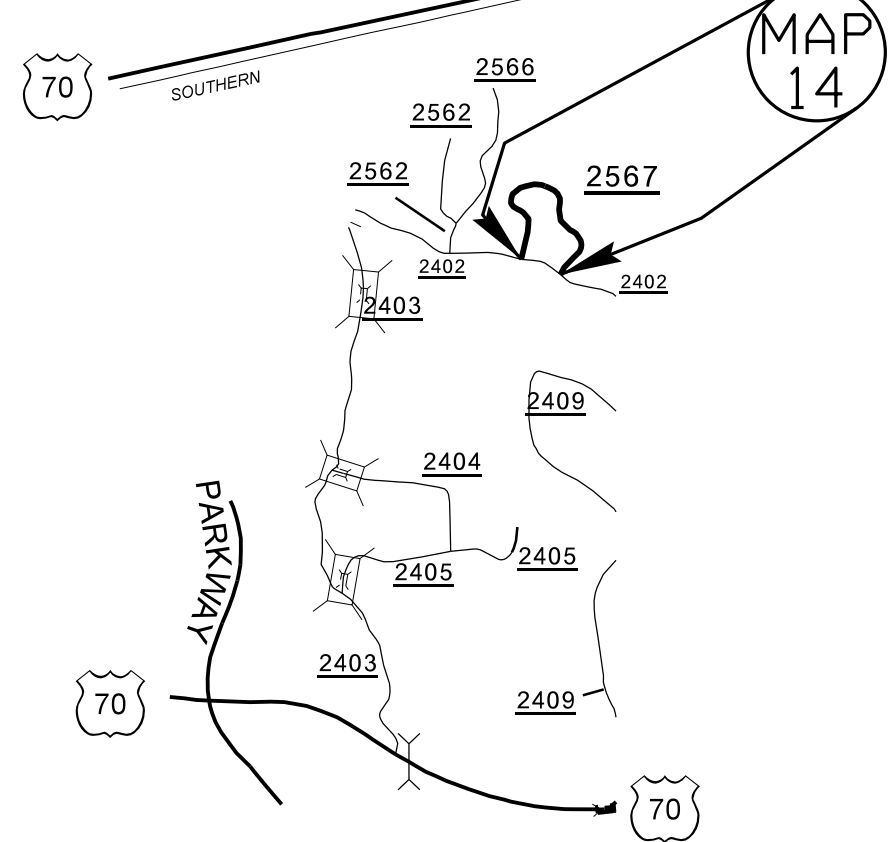
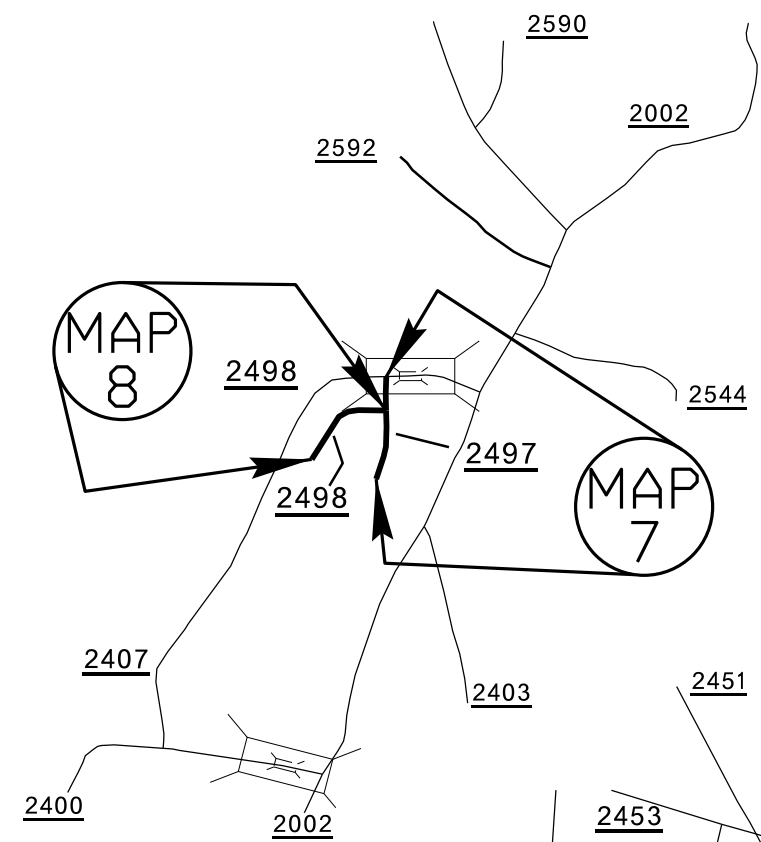
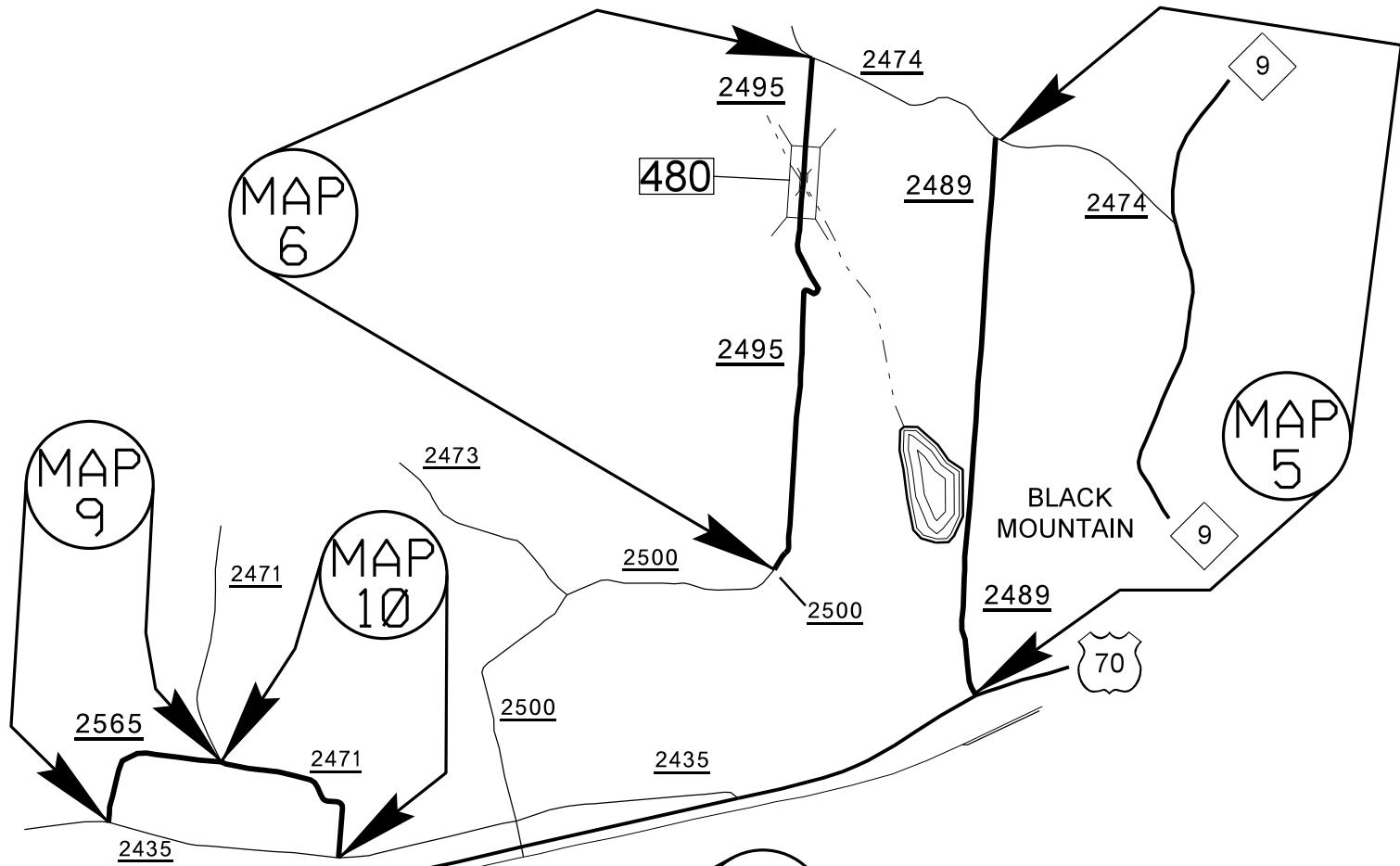
BUNCOMBE COUNTY

PROJECT NO.	SHEET NO.	TOTAL NO.
2017CPT.13.01.10111, 2017CPT.13.01.20111, 2017CPT.13.01.20112	2	19



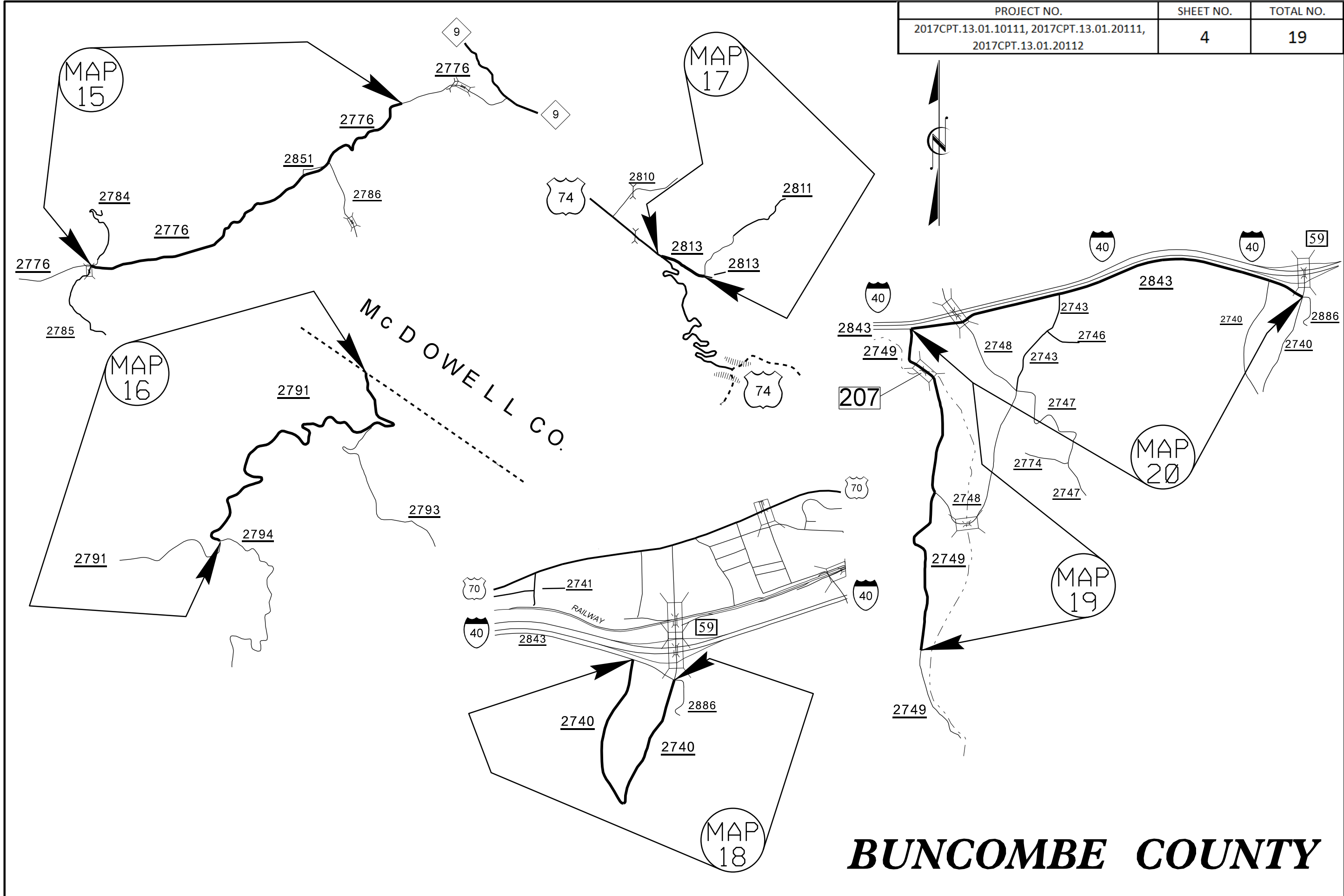
BUNCOMBE COUNTY

PROJECT NO.	SHEET NO.	TOTAL NO.
2017CPT.13.01.10111, 2017CPT.13.01.20111, 2017CPT.13.01.20112	3	19



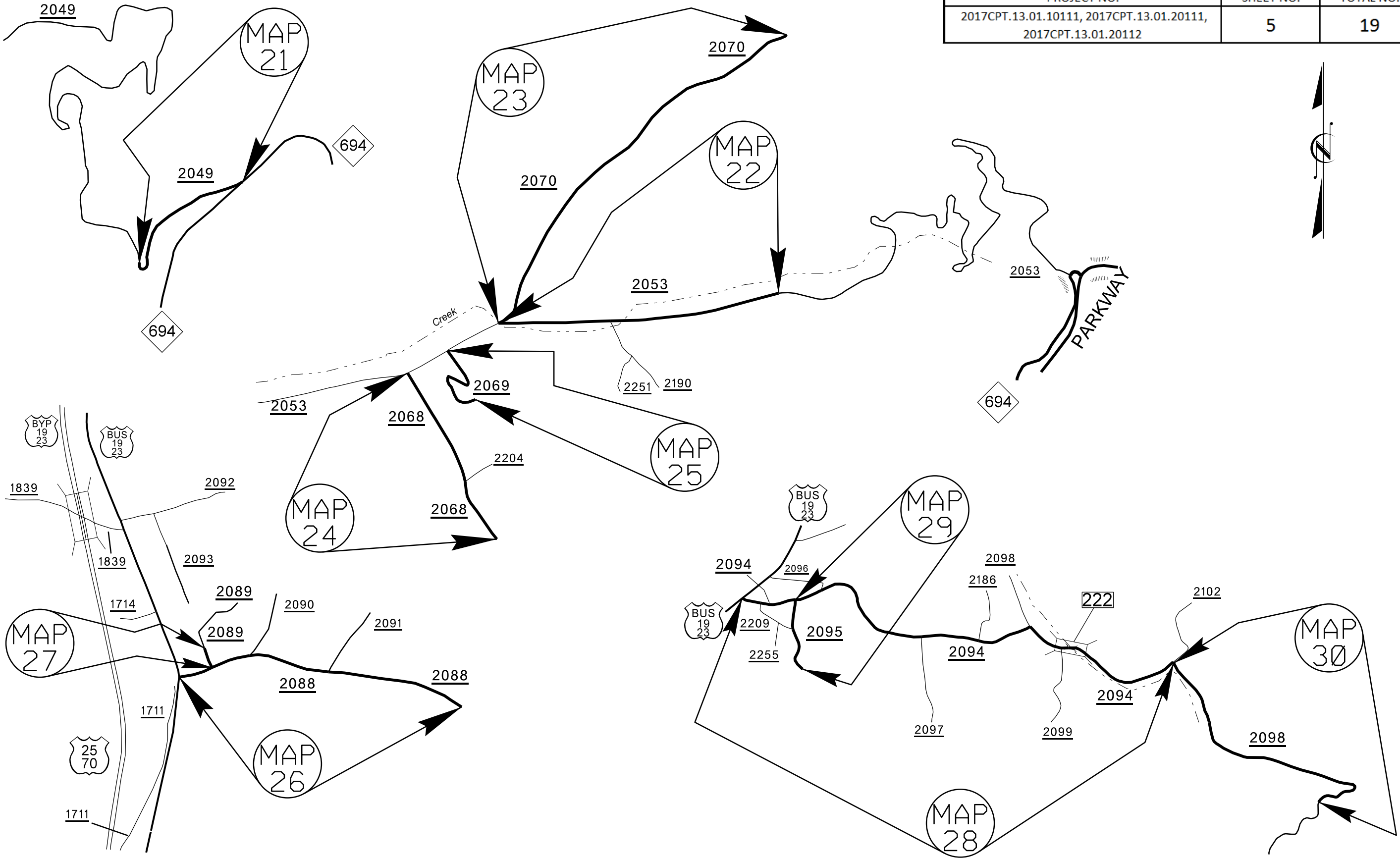
BUNCOMBE COUNTY

PROJECT NO.	SHEET NO.	TOTAL NO.
2017CPT.13.01.10111, 2017CPT.13.01.20111, 2017CPT.13.01.20112	4	19



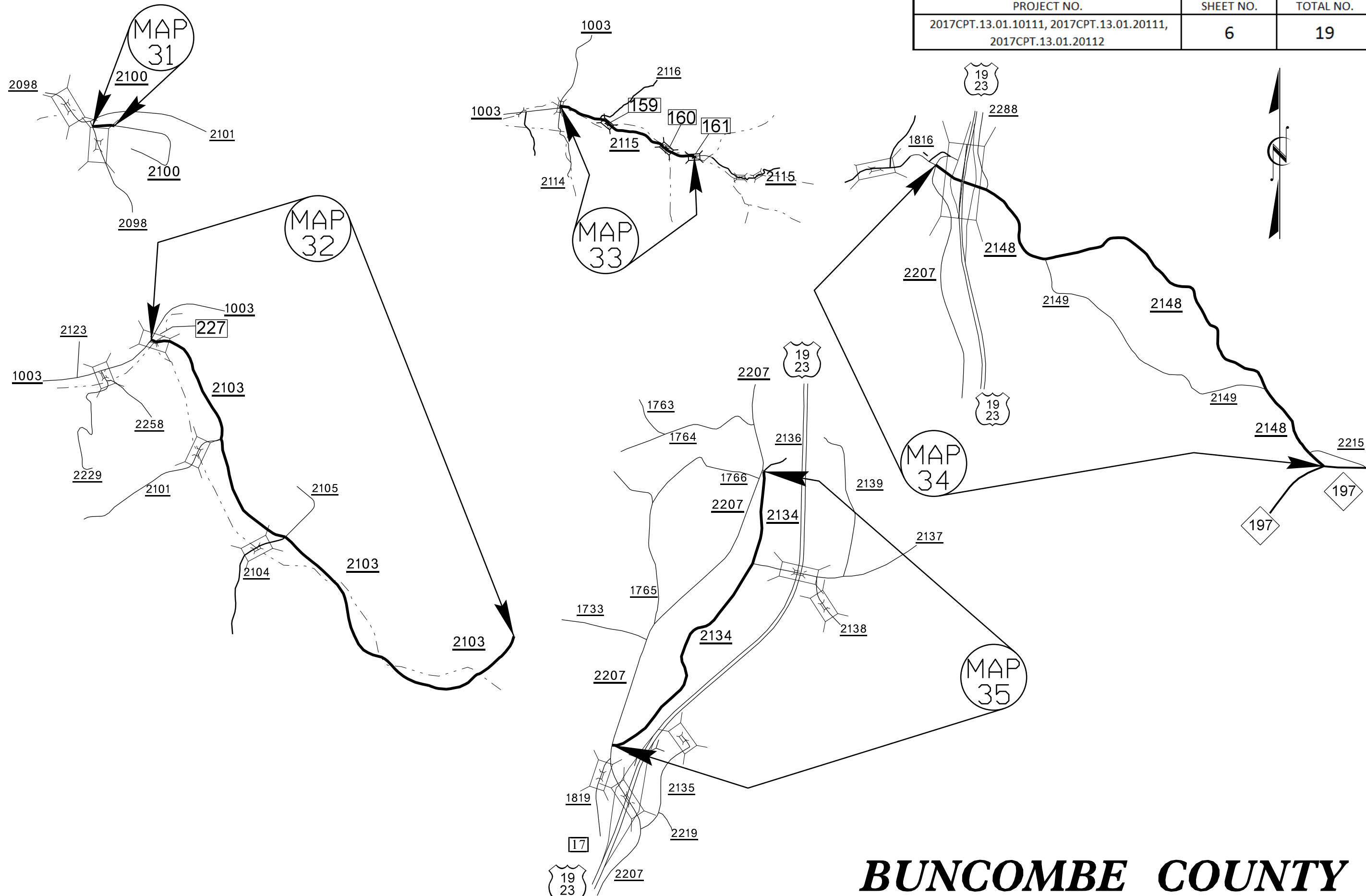
BUNCOMBE COUNTY

PROJECT NO.	SHEET NO.	TOTAL NO.
2017CPT.13.01.10111, 2017CPT.13.01.20111, 2017CPT.13.01.20112	5	19



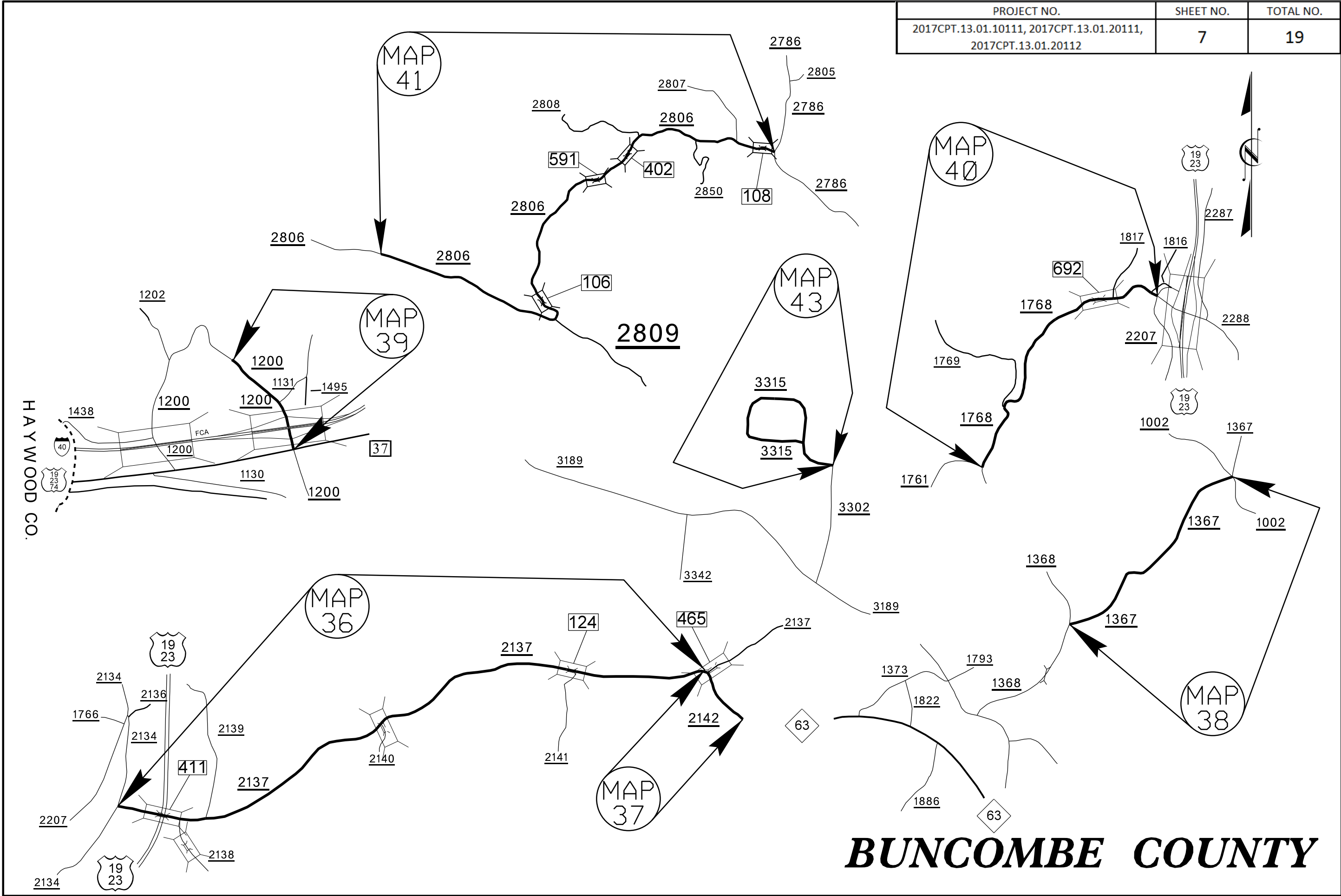
BUNCOMBE COUNTY

PROJECT NO.	SHEET NO.	TOTAL NO.
2017CPT.13.01.10111, 2017CPT.13.01.20111, 2017CPT.13.01.20112	6	19

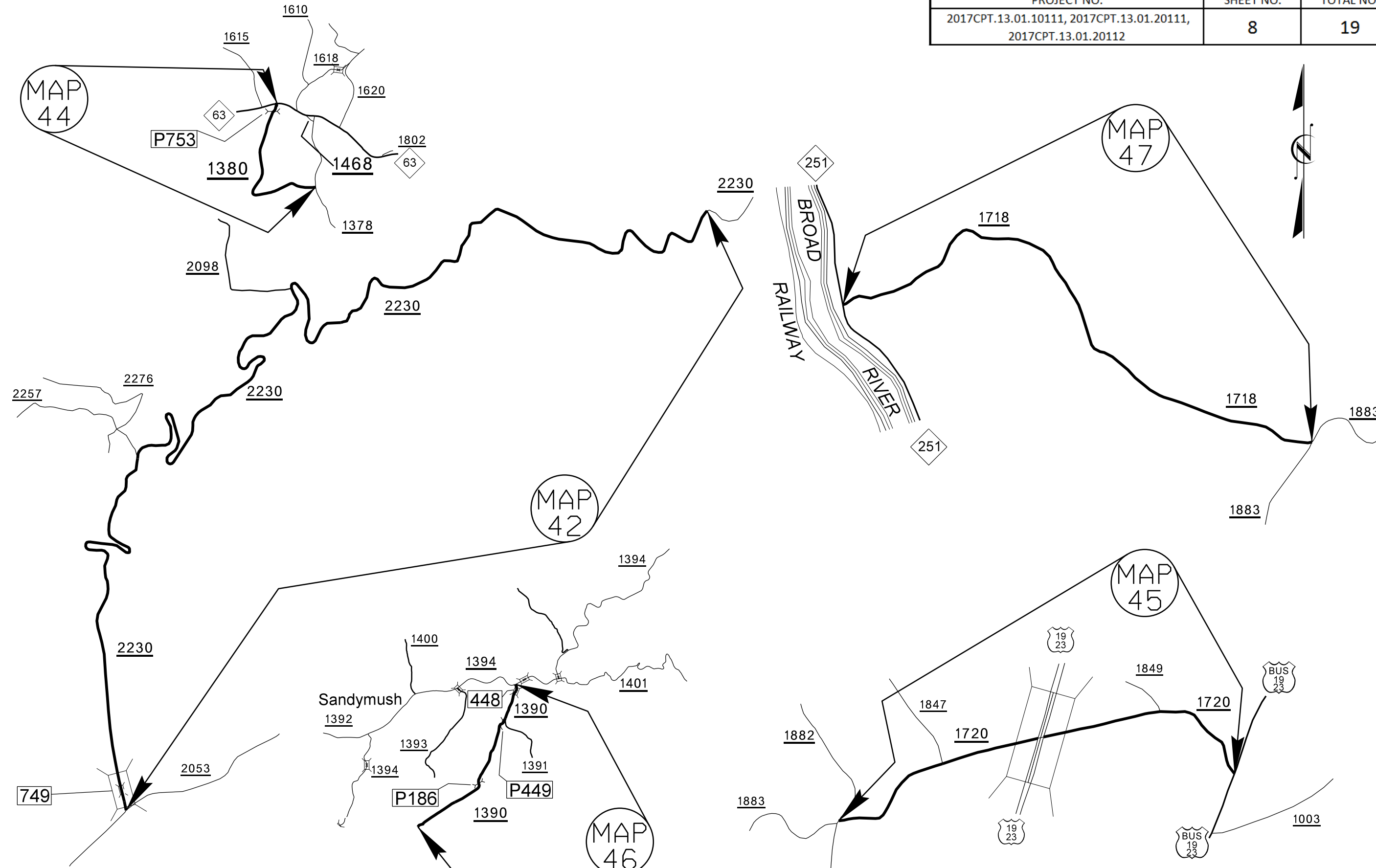


BUNCOMBE COUNTY

PROJECT NO.	SHEET NO.	TOTAL NO.
2017CPT.13.01.10111, 2017CPT.13.01.20111, 2017CPT.13.01.20112	7	19

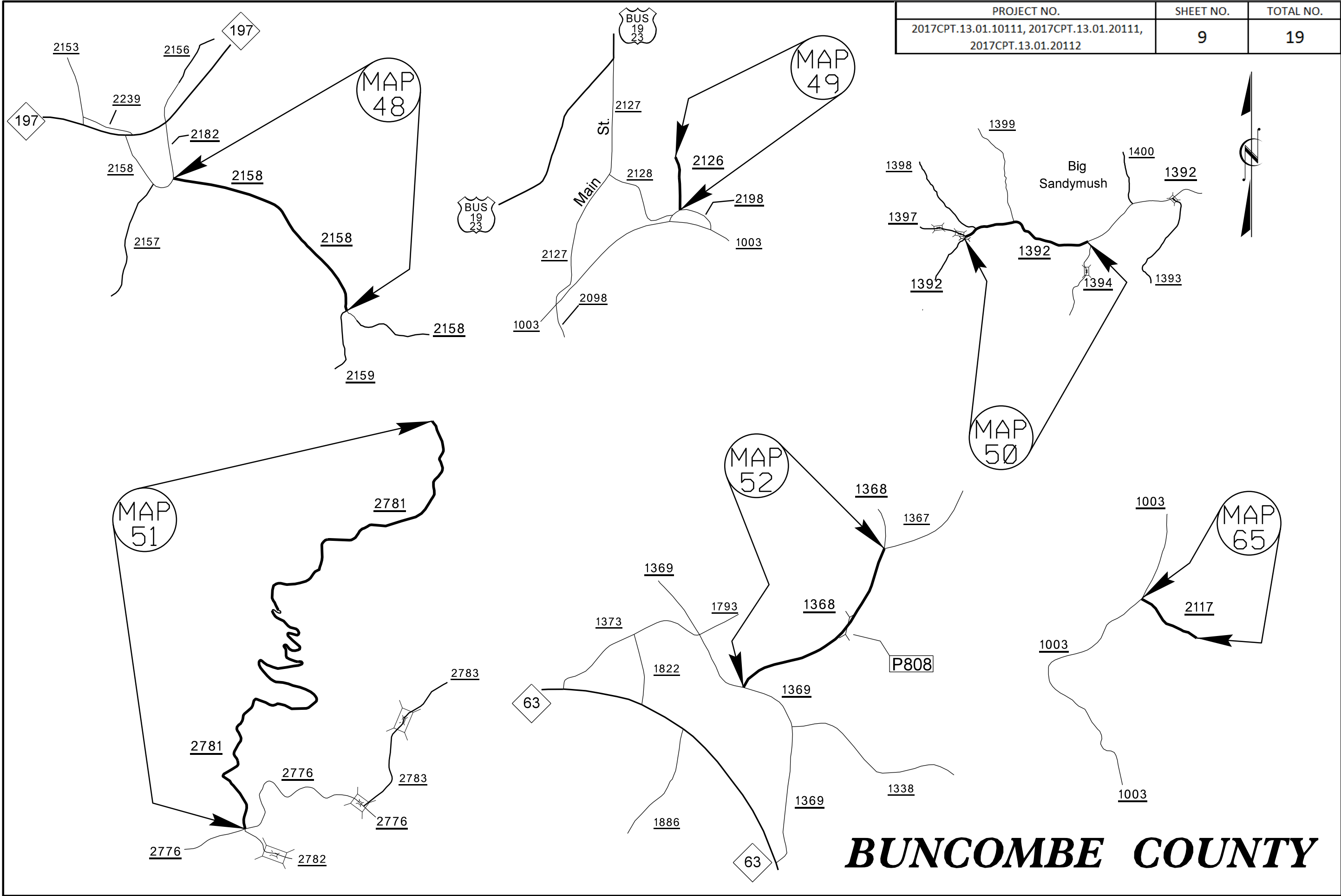


PROJECT NO.	SHEET NO.	TOTAL NO.
2017CPT.13.01.10111, 2017CPT.13.01.20111, 2017CPT.13.01.20112	8	19



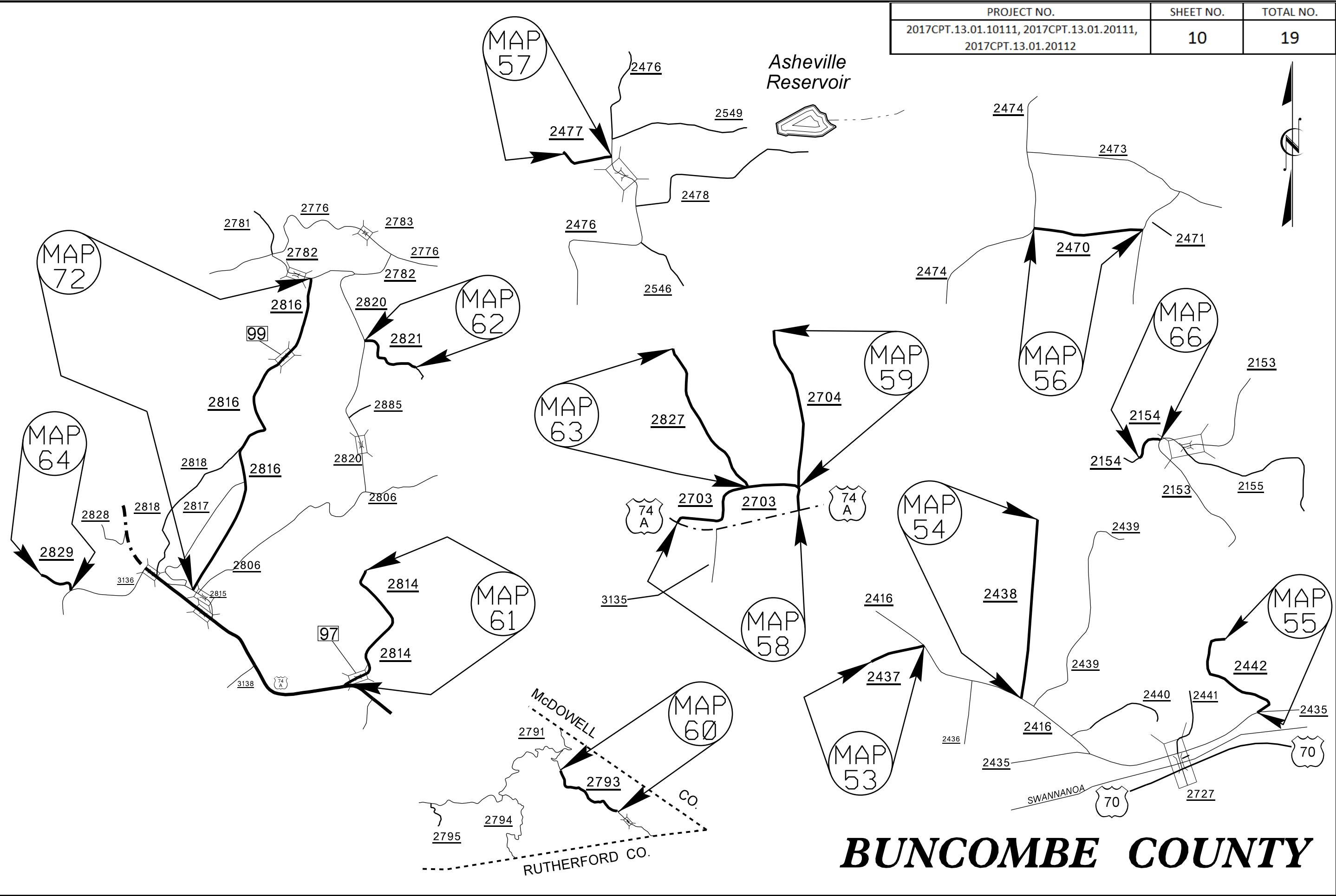
BUNCOMBE COUNTY

PROJECT NO.	SHEET NO.	TOTAL NO.
2017CPT.13.01.10111, 2017CPT.13.01.20111, 2017CPT.13.01.20112	9	19



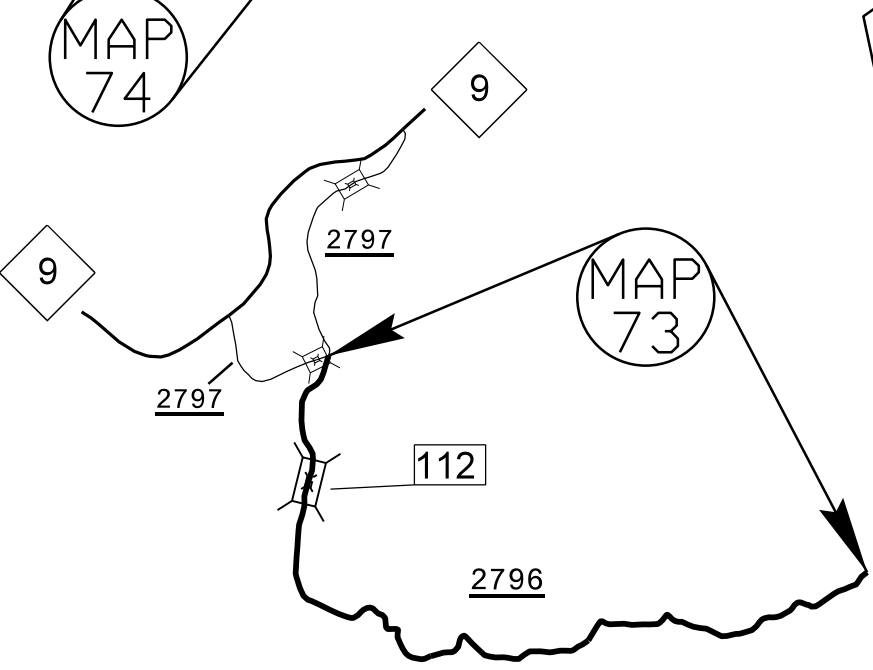
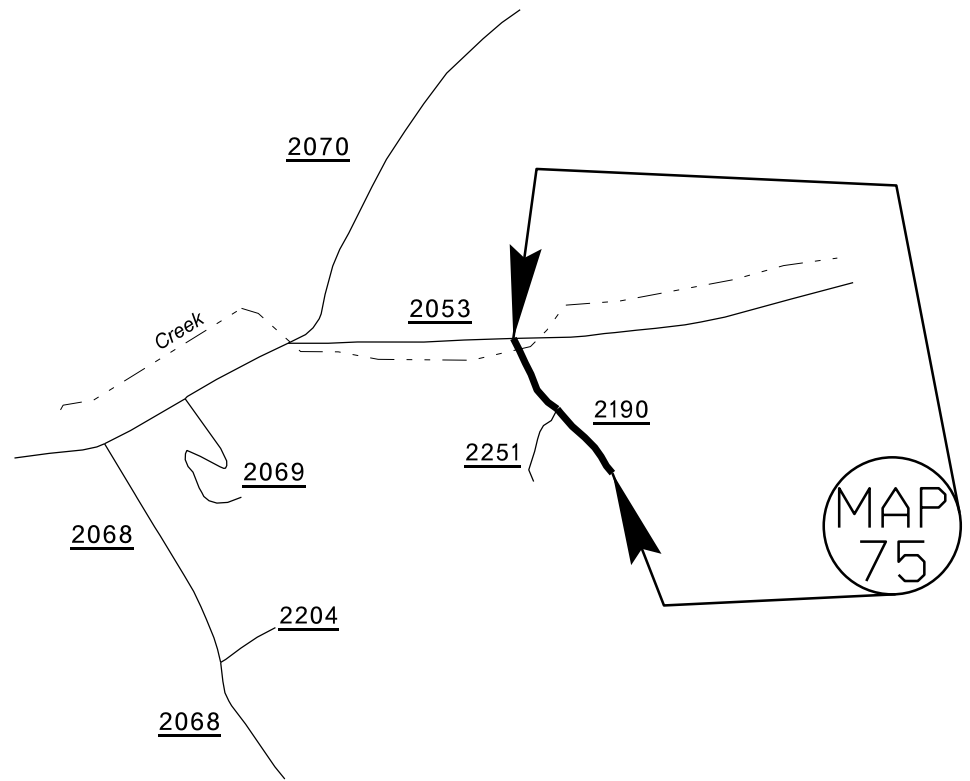
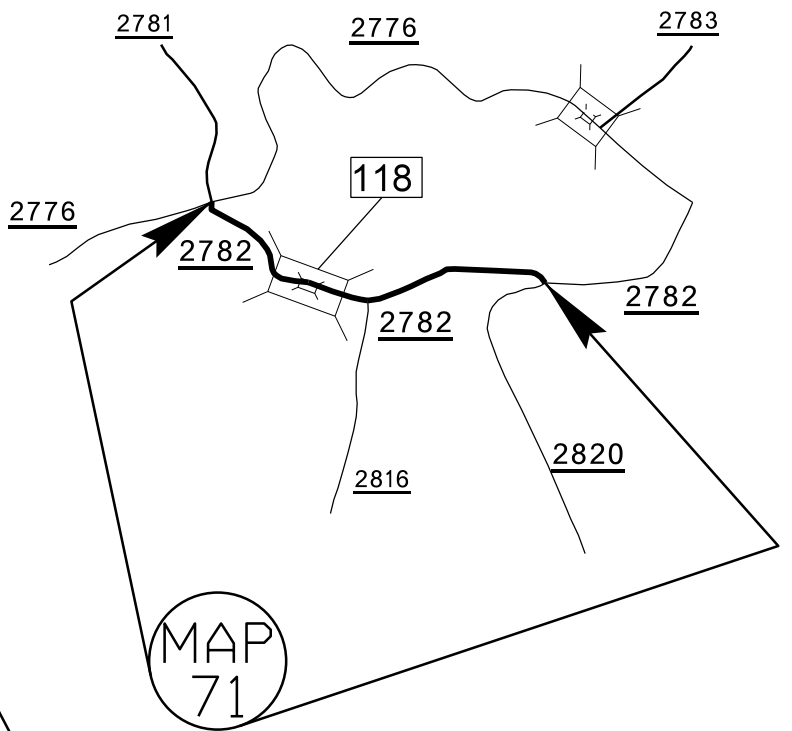
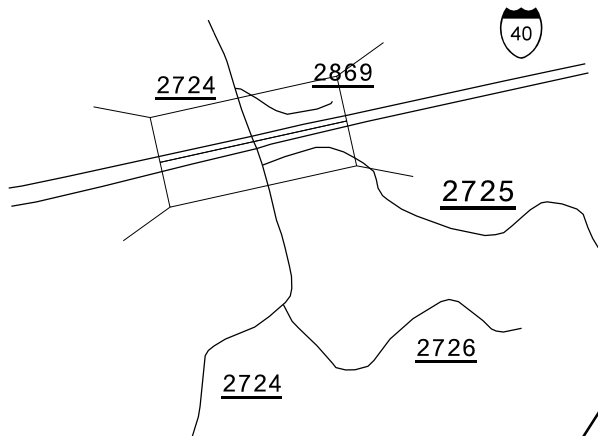
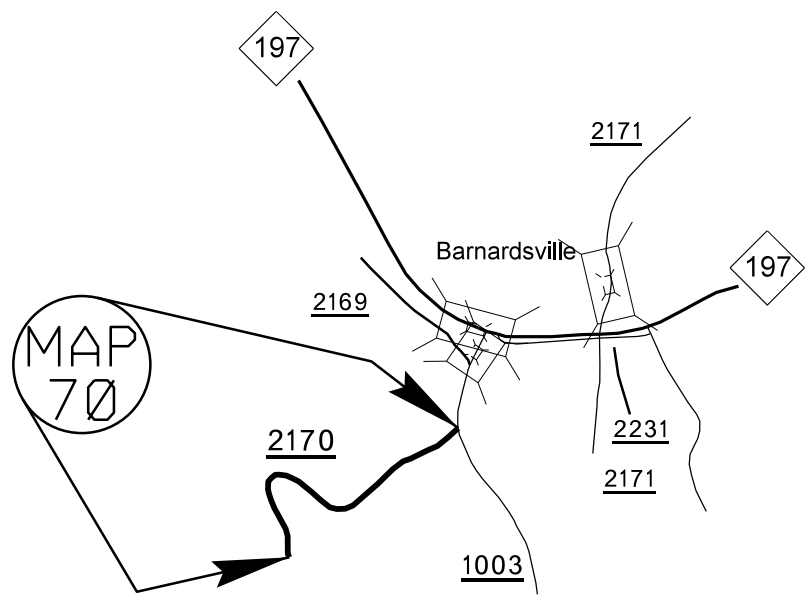
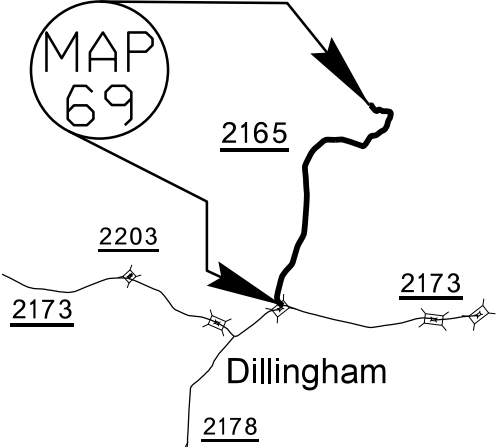
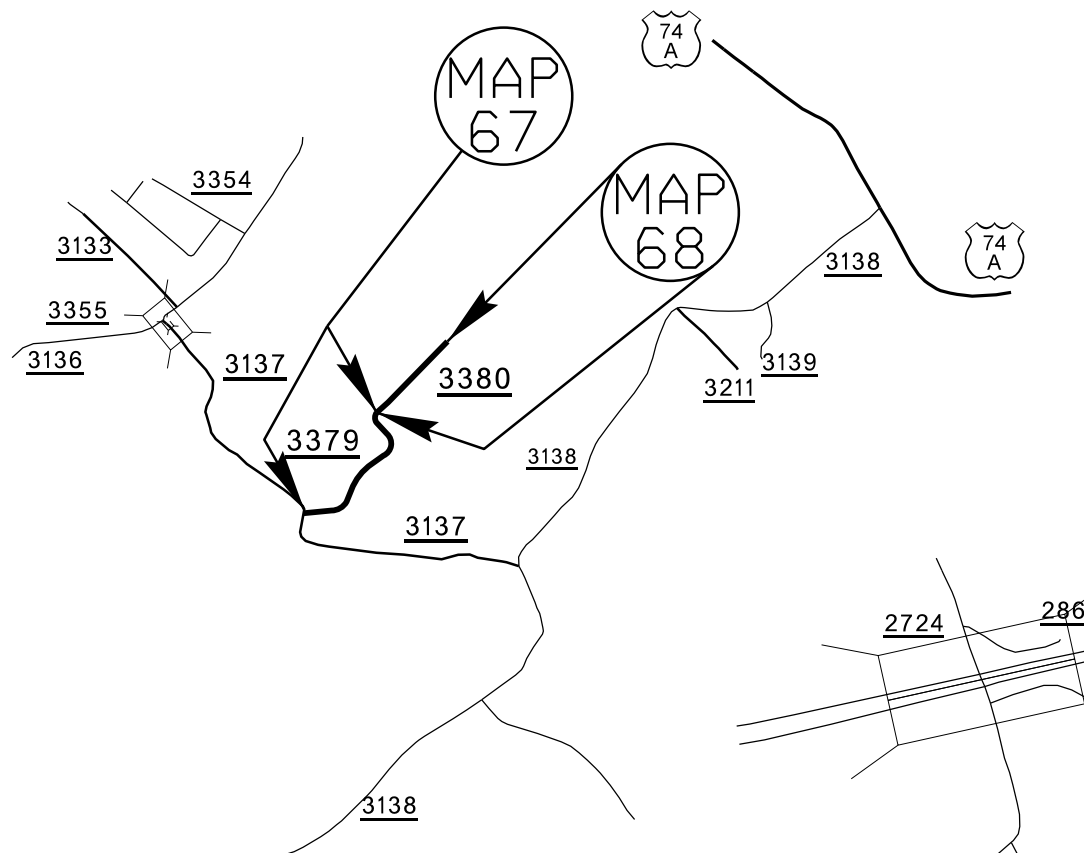
BUNCOMBE COUNTY

PROJECT NO.	SHEET NO.	TOTAL NO.
2017CPT.13.01.10111, 2017CPT.13.01.20111, 2017CPT.13.01.20112	10	19



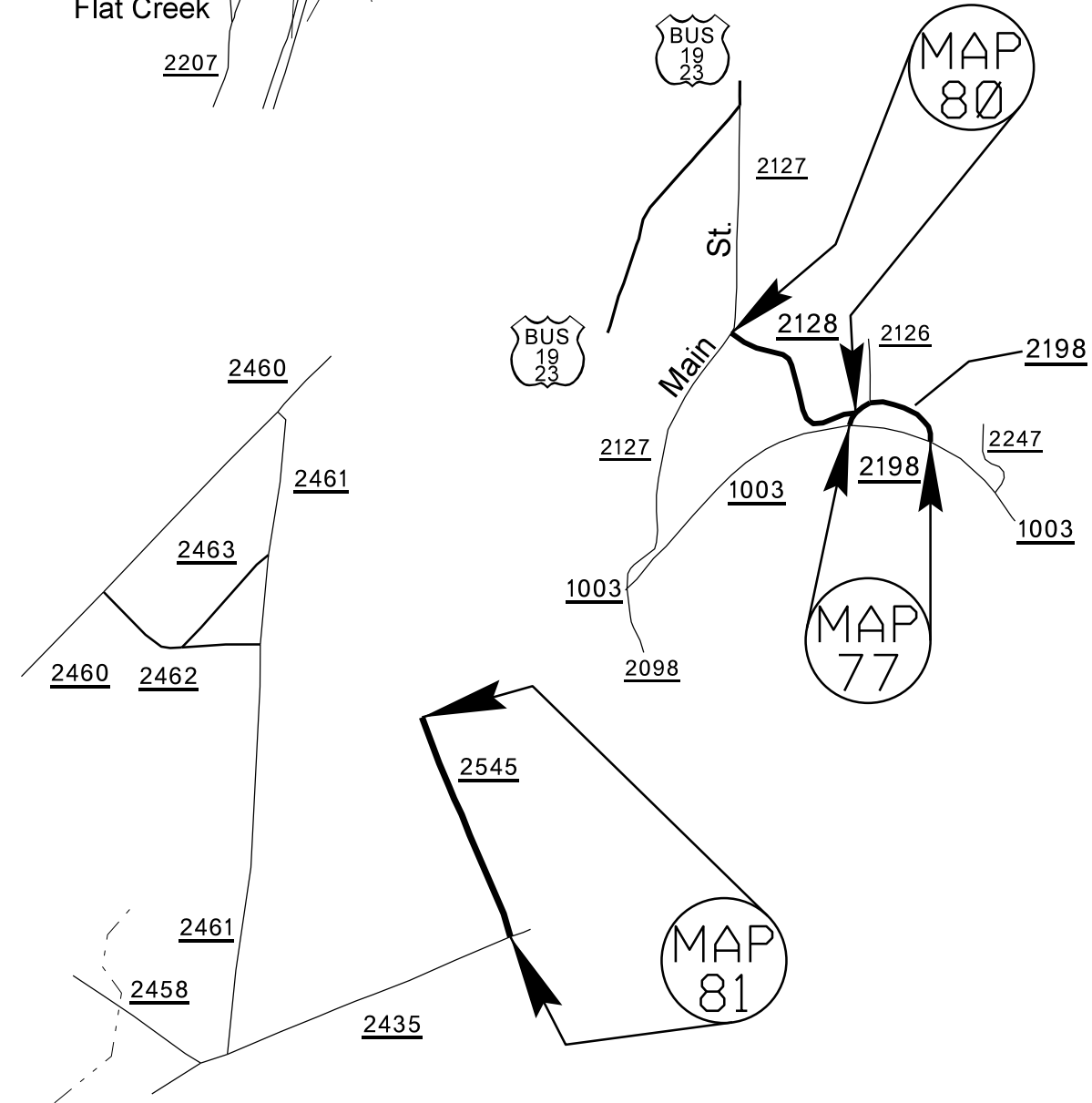
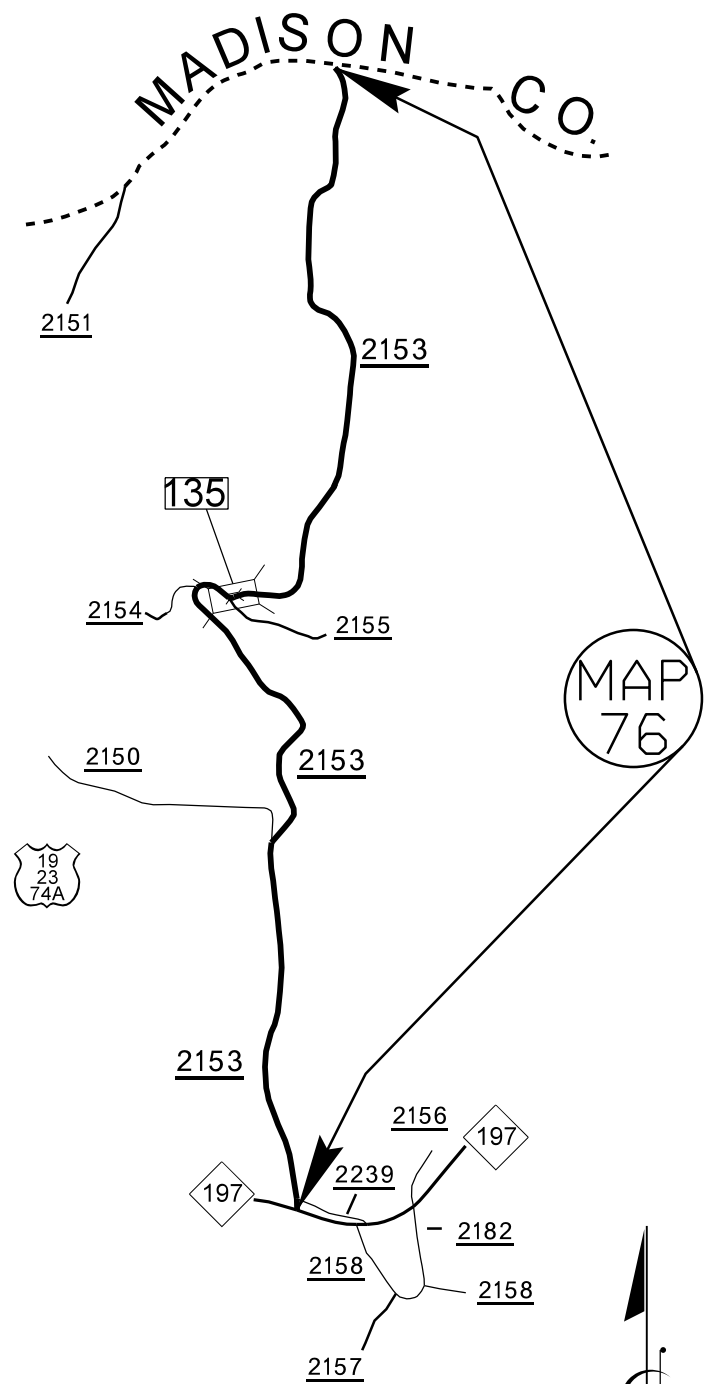
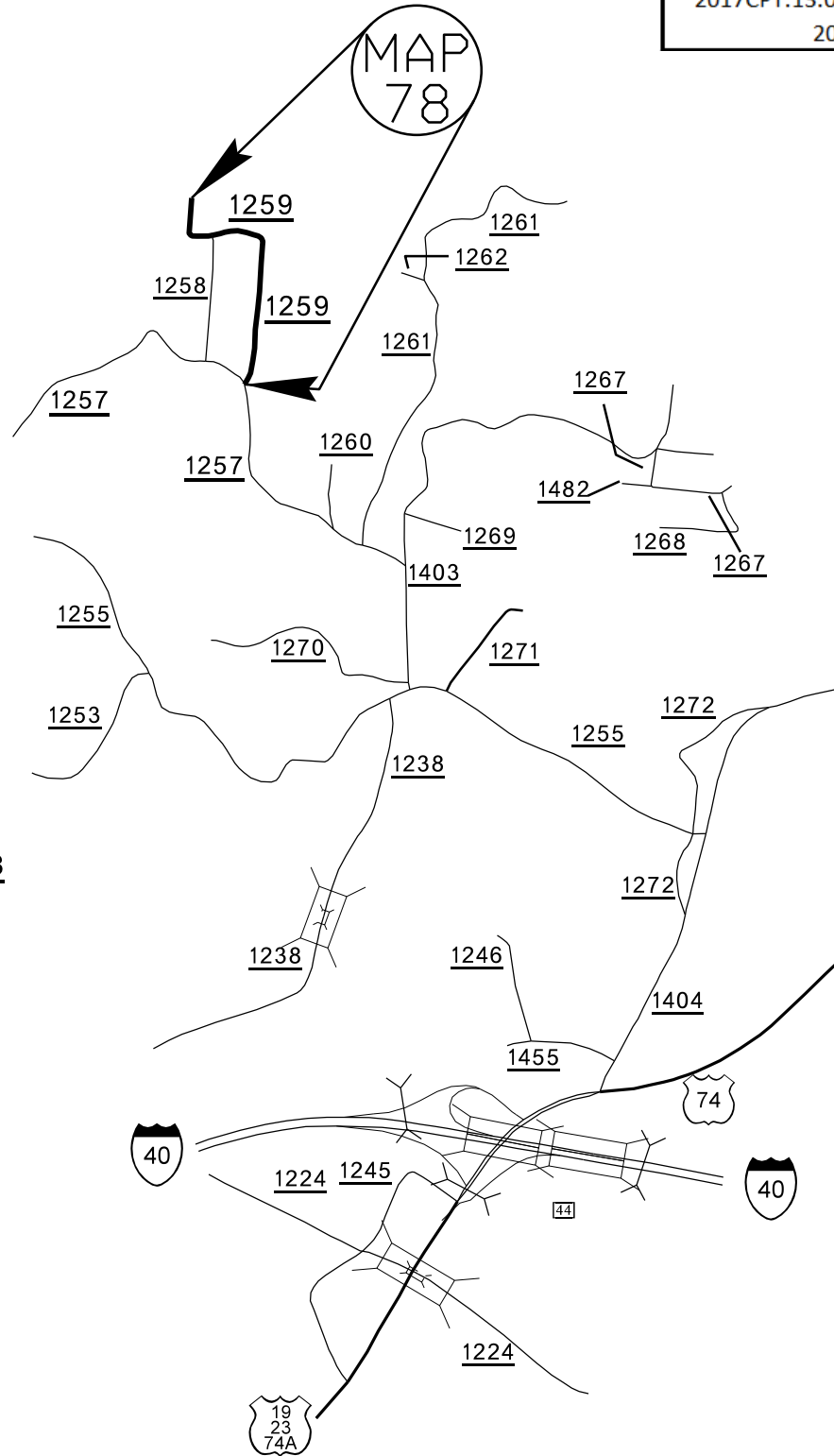
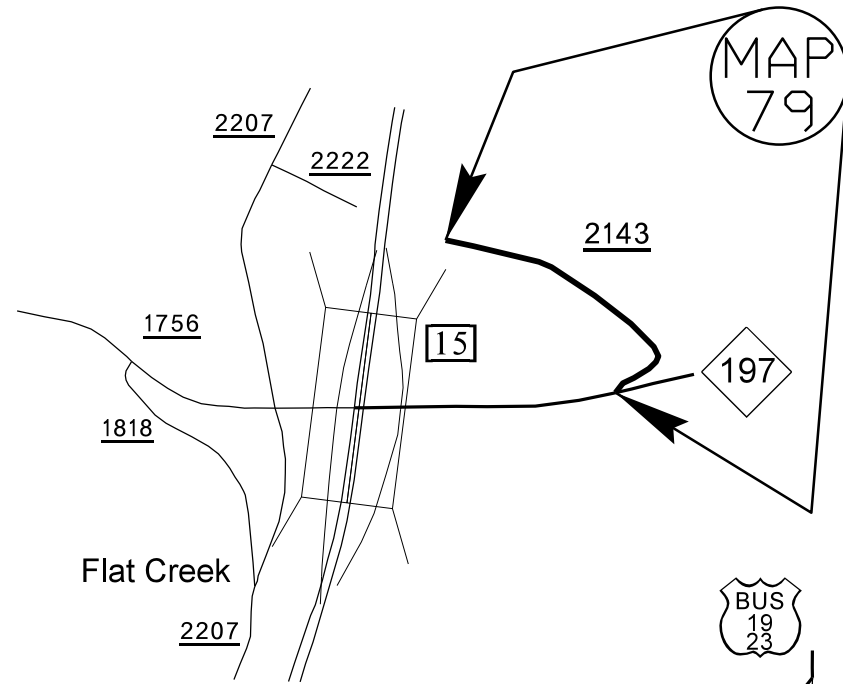
BUNCOMBE COUNTY

PROJECT NO.	SHEET NO.	TOTAL NO.
2017CPT.13.01.10111, 2017CPT.13.01.20111, 2017CPT.13.01.20112	11	19



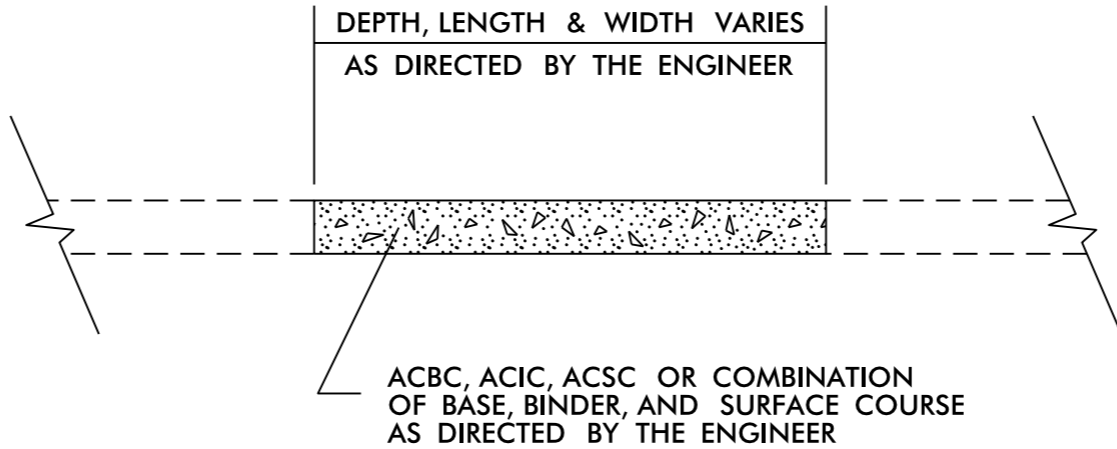
BUNCOMBE COUNTY

PROJECT NO.	SHEET NO.	TOTAL NO.
2017CPT.13.01.10111, 2017CPT.13.01.20111, 2017CPT.13.01.20112	12	19



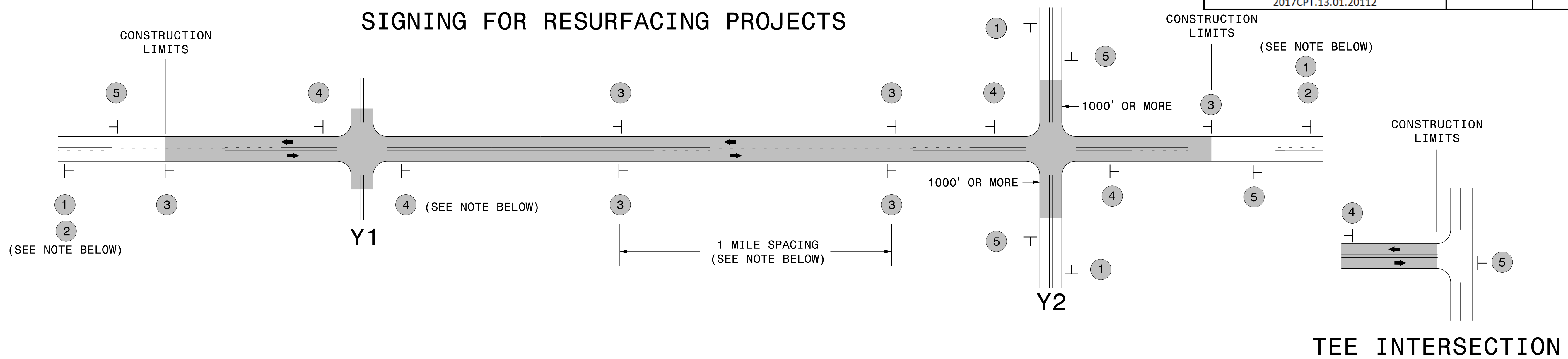
BUNCOMBE COUNTY

PROJECT NO.	SHEET NO.	TOTAL NO.
2017CPT.13.01.10111, 2017CPT.13.01.20111, 2017CPT.13.01.20112	13	19



DETAIL FOR PATCHING EXISTING PAVEMENT

SIGNING FOR RESURFACING PROJECTS



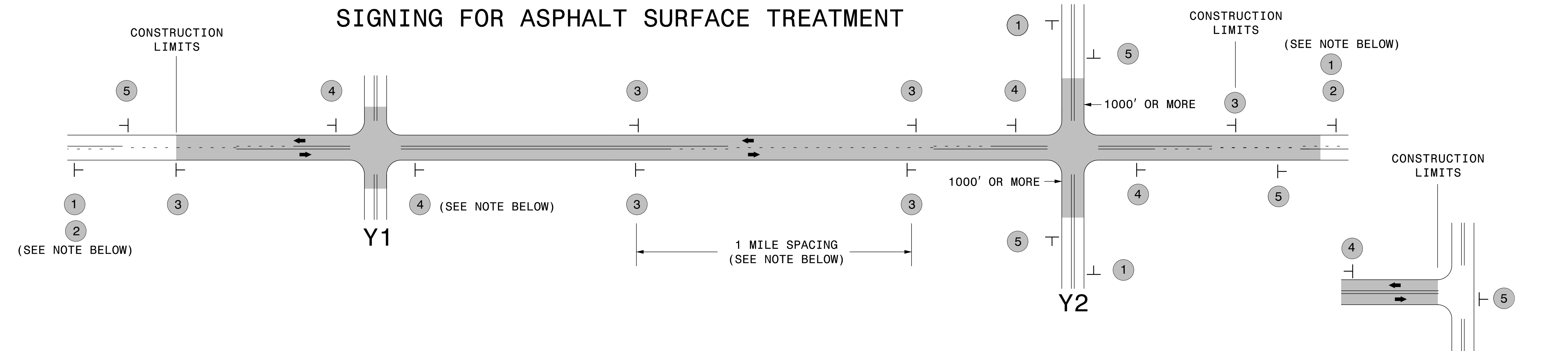
LEGEND	
—	STATIONARY SIGN
←	DIRECTION OF TRAFFIC FLOW

MAINLINE (-L-) SIGNING

-Y- LINE SIGNING

SIGNING NOTES AND PLACEMENT PER DIRECTION	1	2	3	4	5	
			<p>PLACE 1000' PRIOR TO BEGINNING OF CONSTRUCTION LIMITS. ONLY USED ON -Y- LINES IF RESURFACING LIMITS EXTEND 1000' ALONG -Y- LINE.</p> <p>#2 SIGN ONLY USED WHEN RESURFACING LIMITS ARE 2 OR MORE MILES IN LENGTH. ROUND UP TO NEXT WHOLE NUMBER. (NO FRACTIONAL OR DECIMAL NUMBERS)</p>	<p>- PLACE INITIALLY AT THE CONSTRUCTION LIMITS AND SPACE 1 MILE APART THEREAFTER.</p> <p>- AT TEE INTERSECTIONS INSTALL INITIALLY 0.5 MILE FROM INTERSECTION AND SPACE 1 MILE APART THEREAFTER.</p>	<p>NO REQUIRED STATIONARY SIGNING FOR THE FOLLOWING -Y- LINE CONDITIONS:</p> <ol style="list-style-type: none"> 1) LESS THAN 1000' OF RESURFACING ALONG -Y- LINE 2) SUBDIVISION ROADS 3) DEAD END ROADS <p>WHEN PAVING/CONSTRUCTION ACTIVITIES PROCEED ACROSS AN UNSIGNED -Y- LINE, ADVANCE WARNING PORTABLE SIGNS SHALL BE USED ALONG THE -Y- LINE AS SHOWN BELOW. REMOVE UPON COMPLETION OF WORK.</p>	<p>PLACED 500' IN ADVANCE OF FLAGGER. PLACED 250' IN ADVANCE OF FLAGGER.</p>

**RESURFACING
ADVANCE WARNING SIGNS
FOR
RURAL AND SUBURBAN
2 LANE ROADWAYS**



LEGEND
 ┆ STATIONARY SIGN
 ← DIRECTION OF TRAFFIC FLOW

MAINLINE (-L-) SIGNING

-Y- LINE SIGNING

SIGNING NOTES AND PLACEMENT PER DIRECTION	1		PLACE 1000' PRIOR TO BEGINNING OF CONSTRUCTION LIMITS. ONLY USED ON -Y- LINES IF RESURFACING LIMITS EXTEND 1000' ALONG -Y- LINE.
	2		#2 SIGN ONLY USED WHEN RESURFACING LIMITS ARE 2 OR MORE MILES IN LENGTH. ROUND UP TO NEXT WHOLE NUMBER. (NO FRACTIONAL OR DECIMAL NUMBERS)
	3	 	- ALTERNATE THE FOLLOWING TWO SIGNS: - STARTING WITH "LOOSE GRAVEL" (W8-7) FOLLOWED BY "UNMARKED PAVEMENT". - PLACE INITIALLY AT THE CONSTRUCTION LIMITS AND SPACED 1 MILE APART THEREAFTER. - AT TEE INTERSECTIONS INSTALL INITIALLY 0.5 MILE FROM INTERSECTION AND SPACE 1 MILE APART THEREAFTER.
	4		- THESE ARE FOR -Y- LINES THAT ARE "THROUGH" ROADWAYS. - DEAD END AND SUBDIVISION ROADS ARE NOT "THROUGH" ROADWAYS. - INSTALL 500' +/- FROM EACH -Y- LINE APPROACH AS SHOWN ABOVE. - FOR MULTIPLE -Y- LINES THAT ARE SEPARATED BY 0.25 MILES OR LESS, TREAT AS A SINGLE UNIT AND INSTALL WITHIN 500' OF EACH APPROACH. - A MAXIMUM OF 2 SIGN SETS PER MILE. DO NOT INSTALL WHEN -Y- LINES ARE WITHIN 0.5 MILES FROM "END ROAD WORK" SIGN. - FOR TEE INTERSECTIONS, INSTALL WITHIN 500' +/- OF THE INTERSECTION ALONG -L- LINE.
	5		PLACE 500' FOLLOWING THE END OF CONSTRUCTION LIMITS OR AS SHOWN WHEN WORK ENDS AT A 3-WAY TEE INTERSECTION.

NO REQUIRED STATIONARY SIGNING FOR THE FOLLOWING -Y- LINE CONDITIONS:

- 1) LESS THAN 1000' OF RESURFACING ALONG -Y- LINE
- 2) SUBDIVISION ROADS
- 3) DEAD END ROADS

WHEN PAVING/CONSTRUCTION ACTIVITIES PROCEED ACROSS AN UNSIGNED -Y- LINE, ADVANCE WARNING PORTABLE SIGNS SHALL BE USED ALONG THE -Y- LINE AS SHOWN BELOW. REMOVE UPON COMPLETION OF WORK.

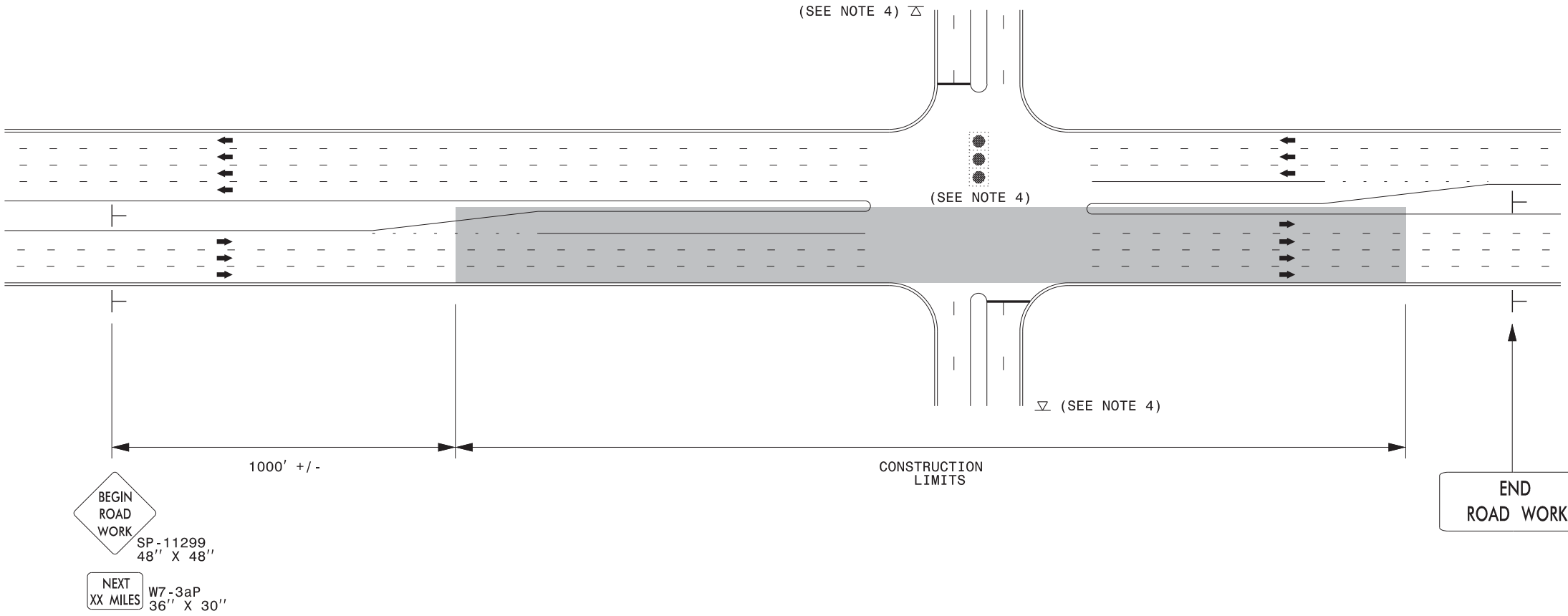
W20-1
48" X 48"

W20-7 A
48" X 48"

PLACED 500' IN ADVANCE OF FLAGGER. PLACED 250' IN ADVANCE OF FLAGGER.

ADVANCE WARNING SIGNS FOR ASPHALT SURFACE TREATMENTS 2 LANE ROADWAYS

URBAN / SUBURBAN WORKZONES



NOTES:

- 1) 48" x 48" SIZED SIGNS (SP- 11299) MAY BE REDUCED TO 36" X 36" ON ROADWAYS WITH SPEED LIMITS OF 40 MPH OR LESS.
- 2) MOUNT SIGNS THAT ARE LARGER THAN 10 SQUARE FEET IN AREA ON TWO OR MORE WOOD OR U-CHANNEL SUPPORTS. PERFORATED SQUARE TUBING SUPPORT SYSTEMS MAY SUPPORT LARGER AREAS ON A SINGLE SUPPORT. FOLLOW MANUFACTURER'S RECOMMENDATIONS. THESE SYSTEMS SHALL BE NCHRP 350 COMPLIANT AND NCDOT APPROVED.
- 3) ADVANCE WARNING SIGNS NOT REQUIRED ON NON-SIGNALIZED SIDE STREETS.
- 4) MAY USE LAW ENFORCEMENT TO CONTROL TRAFFIC AT SIGNALIZED INTERSECTIONS AS DIRECTED BY THE ENGINEER. PROVIDE PORTABLE "ROAD WORK AHEAD" (W20-1) SIGNS 500' IN ADVANCE ALONG BOTH APPROACHES FROM THE SIDE STREETS WHEN PAVING PROCEEDS THROUGH THE INTERSECTION.
- 5) LATERAL CLEARANCE AT ALL SIGN LOCATIONS SHALL BE 2' AS MEASURED FROM THE EDGE OF PAVEMENT OR THE FACE OF THE CURB. WHEN UNABLE TO OBTAIN THE LATERAL CLEARANCE WITHIN THE MEDIAN AREA USE SHOULDER MOUNTS ONLY.
- 6) SIGN MOUNT LOCATIONS SHALL NOT BLOCK SIDEWALKS OR DRIVEWAYS.
- 7) IF STATIONARY GENERAL WARNING SIGNS ARE USED, THEY WILL BE PAID FOR PER SECTION 104 OF THE NCDOT STANDARD SPECIFICATIONS AS EXTRA WORK.
- 8) IF MILLED AREAS ARE NOT PAVED BACK BY THE END OF THE WORK DAY, PORTABLE SIGNS SHALL BE USED TO WARN DRIVERS OF THE PRESENT CONDITIONS. THESE ARE TO INCLUDE, BUT NOT LIMITED TO "ROUGH ROAD" W8-8, "UNEVEN LANES" W8-11, "GROOVED PAVEMENT" W8-15 w/MOTORCYCLE PLAQUE MOUNTED BELOW. THESE ARE TO BE DOUBLE INDICATED ON MULTI-LANE ROADWAYS WITH SPEED LIMITS 45 MPH AND GREATER WHERE LATERAL CLEARANCE CAN BE OBTAINED WITHIN THE MEDIAN AREAS. THESE PORTABLE SIGNS ARE INCIDENTAL TO THE OTHER ITEMS OF WORK INCLUDED IN THE TEMPORARY TRAFFIC CONTROL (LUMP SUM) PAY ITEM.

LEGEND	
├	STATIONARY SIGN
➔	DIRECTION OF TRAFFIC FLOW



**RESURFACING ADVANCE
WARNING SIGNS FOR
URBAN / SUBURBAN
FACILITIES**

SIGN NUMBER: 11299

BACKG COLOR: Fluorescent Orange

DESIGN BY: WJ

CHECKED BY:

DATE: Jun 22, 2011

TYPE: B

COPY COLOR: Black

PROJECT ID: ALL

DIV: ALL

QUANTITY: SEE PLANS

SYMBOL	X	Y	WID	HT

SIGN WIDTH: 5'-6"

HEIGHT: 5'-6"

SP 11299

PROJECT NO.	SHEET NO.	TOTAL NO.
2017CPT.13.01.10111, 2017CPT.13.01.20111, 2017CPT.13.01.20112	17	19

TOTAL AREA: 30.5 Sq.Ft.

BORDER TYPE: INSET

RECESS: 0.59"

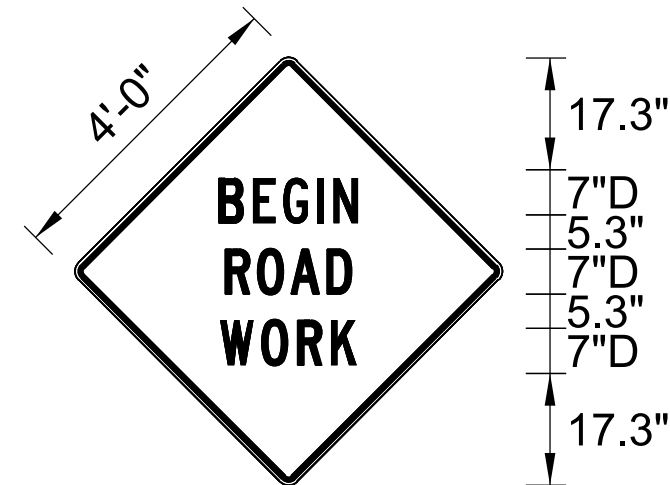
WIDTH: 0.75"

RADII: 1.38"

NO. Z BARS: N/A

LENGTH: N/A

MAT'L: 0.125" (3.2 mm) ALUMINUM



BORDER
R=1.38"
TH=0.75"
IN=0.59"

Spacing Factor is 1 unless specified otherwise

USE NOTES: 1,2

1. Legend and border shall be direct applied black non-reflective sheeting.
2. Background shall be Type VII, VIII, or IX (prismatic) fluorescent orange retroreflective sheeting.

LETTER POSITIONS

Letter spacings are to start of next letter

Series/Size
Text Length

Letter spacings are to start of next letter																	Series/Size Text Length	
		B	E	G	I	N												D 2000 25.2
	20.5	6	5.4	6.3	2.8	4.8	20.5											
		R	O	A	D													D 2000 23.5
	21.4	5.8	5.9	7	4.8	21.4												
		W	O	R	K													D 2000 24.5
	20.9	7.1	6.5	5.9	4.9	20.9												

SIGN NUMBER: SP13106
 TYPE: STATIONARY
 QUANTITY: SEE PLANS

BACKG COLOR: Fluorescent Orange
 COPY COLOR: Black

DESIGN BY: B. RASHID
 PROJECT ID:

CHECKED BY: AIA
 DIV:

DATE: Apr 26, 2013

SYMBOL	X	Y	WID	HT

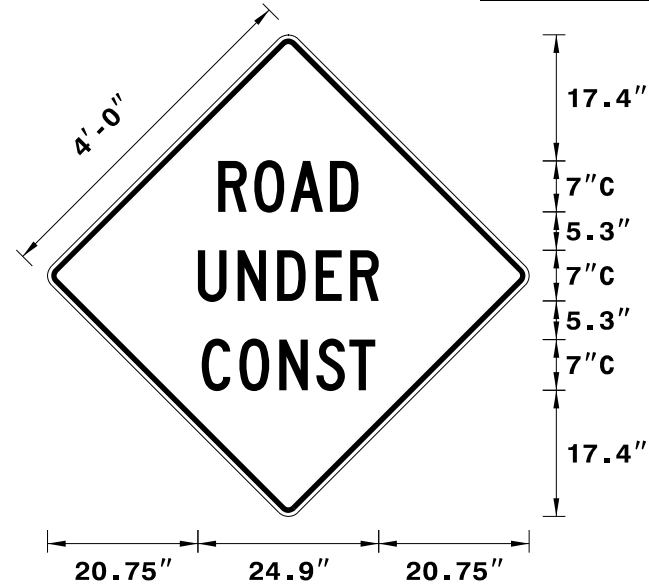
SIGN WIDTH: 4'-0"
 HEIGHT: 4'-0"
 TOTAL AREA: 16.00 Sq.Ft.

BORDER TYPE: INSET
 RECESS: 0.75"
 WIDTH: 1.25"
 RADII: 3"

MAT'L: 0.080" (2.0 mm) ALUMINUM

NO. Z BARS:
 LENGTH:

PROJECT NO.	SHEET NO.	TOTAL NO.
2017CPT.13.01.10111, 2017CPT.13.01.20111, 2017CPT.13.01.20112	18	19



Spacing Factor is 1 unless specified otherwise

USE NOTES: 1,2

- Legend and border shall be direct applied black non-reflective sheeting.
- Background shall be NC GRADE B fluorescent orange retroreflective sheeting.

LETTER POSITIONS

Letter spacings are to start of next letter

Letter spacings are to start of next letter																	Series/Size Text Length
		R	O	A	D												C 2000
	23.5	5	5	5.5	3.9	23.5											19.3
		U	N	D	E	R											C 2000
	20.7	5.5	5.5	5.3	4.8	3.9	20.7										24.9
		C	O	N	S	T											C 2000
	21.2	5.2	5.5	5.1	4.6	3.6	21.2										23.9

